



Best performance for your lab.



Stopcock-Plugs made of High-Performance Fluoroplastics

PTFE



BOLA Stopcock Plugs - what you should know about them.

BOLA stopcock plugs are made of high-quality, FDA-compliant PTFE, which is manufactured using state-of-the-art technology. Thanks to their hard-wearing, durable and heat-resistant material, they hardly absorb any moisture and do not become brittle even at temperatures below 0 °C. In addition, they have an extremely smooth sealing surface that adapts to the glass surface and thus ensures an excellent seal.

+ With the latest technology made from virgin PTFE

+ FDA-compliant material and manufactured in accordance with DIN 12 540 for polished (recognizable by the completely clear and transparent surface) stopcock sleeves

+ Extreme precision - maximum deviation of +5 µm and optimally matched to polished glass sleeves

+ Extremely hard-wearing, durable, heat-resistant (not brittle even at temperatures below 0 °C) and practically does not absorb moisture

+ Extremely smooth sealing surfaces. Material adapts to the glass surface and seals excellently



BOLA Stopcock-Plugs with Taper 1:10

Material: PTFE Material: PP Temperature resistance: 0 °C bis +110 °C Chemical resistance: +++ universal Taper: 1:10

Typ: BOLA Eco-Stopcock-Plugs with bore



Product description:

With bore, smooth surface, with grip and nut made of PP, washer included.

Bore shape	Size NS mm	Thread M	Material of washer	Bore dia. mm	Cat. No.
	10,0 x 23	7	PTFE	1,0	J 1220-01
	12,5 x 27	8	PP	1,5	J 1220-03
	12,5 x 27	8	PP	2,0	J 1220-05
	12,5 x 27	8	PP	2,5	J 1220-06
	14,5 x 29	8	PP	2,5	J 1220-10
	14,5 x 29	8	PP	4,0	J 1220-15
	18,8 x 37	10	PP	4,0	J 1220-20
	18,8 x 37	10	PP	6,0	J 1220-25
	21,5 x 42	14	PTFE	6,0	J 1220-30
	24,0 x 49	14	PTFE	8,0	J 1220-35
	29,2 x 57	14	PTFE	10,0	J 1220-40



Typ: BOLA Eco-Stopcock-Plugs without bore



Product description:

Without bore, smooth surface, with grip and nut made of PP, washer included.

Size NS mm	Thread M	Material of washer	Cat. No.
10,0 x 23	7	PTFE	J 1200-10
12,5 x 27	8	PP	J 1200-12
14,5 x 29	8	PP	J 1200-14
18,8 x 37	10	PP	J 1200-18
24,0 x 49	14	PTFE	J 1200-24
29,2 x 57	14	PTFE	J 1200-29



BOLA Stopcock-Plugs with Taper 1:10

Material: PTFE Material: PP Temperature resistance: 0 °C bis +110 °C Chemical resistance: +++ universal Taper: 1:10

Typ: BOLA Eco-Czako-Stopcock-Plugs with bore



Product description:

With bore, shape Karlsruhe, smooth surface, with grip and nut made of PP, washer included.

Bore shape	Size NS mm	Thread M	Material of washer	Bore dia. mm	Cat. No.
	14,5 x 29	8	PP	2,5	J 1255-10



Typ: BOLA Eco-3-Way-(T-Bore)-Stopcock-Plugs with bore



Product description:

With bore, smooth surface, with grip and nut made of PP, washer included.

Bore shape	Size NS mm	Thread M	Material of washer	Bore dia. mm	Cat. No.
	18,8 x 37	10	PP	2,5	J 1235-15



Typ: BOLA Eco-Stopcock-Plugs for lateral burettes with bore



Product description:

With bore, smooth surface, with grip and nut made of PP, washer and outlet tip I.D. 1 mm included.

Bore shape	Size NS mm	Thread M	Material of washer	Bore dia. mm	Cat. No.
	12,5 x 27	8	PP	1,5	J 1265-10



BOLA Stopcock-Plugs with Taper 1:5

Material: PTFE Material: PP Temperature resistance: 0 °C bis +110 °C Chemical resistance: +++ universal Taper: 1:5

Typ: BOLA Eco-Stopcock-Plugs with bore



Product description:

With bore, smooth surface, with grip and nut made of PP, washer included.

Bore shape	Size NS mm	Thread M	Material of washer	Bore dia. mm	Cat. No.
	13,5 x 24	8	PP	2,5	J 1225-10
	18,2 x 29	10	PP	4,0	J 1225-15



Typ: BOLA Eco-Stopcock-Plugs without bore



Product description:

Without bore, smooth surface, with grip and nut made of PP, washer included.

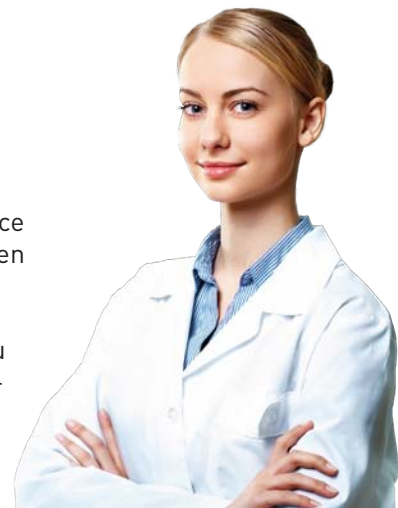
Size NS mm	Thread M	Material of washer	Cat. No.
13,5 x 24	8	PP	J 1205-13
18,2 x 29	10	PP	J 1205-18
19,5 x 34	10	PP	J 1205-19



SPECIAL REQUIREMENTS? CUSTOMIZED!

No problem: As developer and producer, we offer the possibility to produce individually according to your requirement. This is faster, simpler and often more economic than you can imagine.

Just talk to our experts about your ideas – we advise you and support you already during the construction and produce suitable for the material exactly according to your specification. And this already from quantity 1.



You have a special request?
Call us on: **+49 (0) 9346-9286-0**

Or just send us a drawing (a rough sketch is sufficient) and some information to info@bola.de. We will then contact you to discuss further details and establish an offer for you free of charge.



Spare parts for Stopcock Plugs

Product description:	Material	Suitable for size	Taper	Thread M	Cat. No.	
Washers	PTFE	B NS 10,0	1:10	7	J 1198-20	
	PP	A NS 12,5	1:10	8	J 1198-21	
	PP	A NS 14,5	1:10	8	J 1198-21	
	PP	A NS 18,8	1:10	10	J 1198-22	
	PTFE	B NS 21,5	1:10	14	J 1198-24	
	PTFE	B NS 24,0	1:10	14	J 1198-24	
	PTFE	B NS 29,2	1:10	14	J 1198-26	
	PP	A 13,5	1:5	8	J 1198-21	
	PP	A 18,2	1:5	10	J 1198-22	
	PP	A 19,5	1:5	10	J 1198-22	
	PTFE	B 28,0	1:5	14	J 1198-26	
	O-Rings	NBR	NS 10,0	1:10	7	
NBR		NS 12,5	1:10	8	J 1198-02	
NBR		NS 14,5	1:10	8	J 1198-02	
NBR		NS 18,8	1:10	10	J 1198-03	
NBR		NS 21,5	1:10	14	J 1198-05	
NBR		NS 24,0	1:10	14	J 1198-05	
NBR		NS 29,2	1:10	14	J 1198-05	
NBR		13,5	1:5	8	J 1198-02	
NBR		18,2	1:5	10	J 1198-03	
NBR		19,5	1:5	10	J 1198-03	
NBR		28,0	1:5	14	J 1198-05	
Knurled Nuts	PP	NS 10,0	1:10	7	J 1198-40	
	PP	NS 12,5	1:10	8	J 1198-41	
	PP	NS 14,5	1:10	8	J 1198-41	
	PP	NS 18,8	1:10	10	J 1198-42	
	PP	NS 21,5	1:10	14	J 1198-44	
	PP	NS 24,0	1:10	14	J 1198-44	
	PP	NS 29,2	1:10	14	J 1198-44	
	PP	13,5	1:5	8	J 1198-41	
	PP	18,2	1:5	10	J 1198-42	
	PP	19,5	1:5	10	J 1198-42	
	PP	28,0	1:5	14	J 1198-44	

MADE TO MEASURE.

Every lab is different. By offering an extensive range of standardized PTFE plugs we take into account the varied requirements of the respective branches and sectors.

You are in need of getting lab equipment for your special application?

We are able to offer individual custom stopcock-plugs exactly adapted to your special glass casing or with other, non-standard bore diameters. This is easier and faster than you may expect. Discuss your idea with our professionals. They will give advice and support during design. Finally, your idea will become real: We produce to your requirements and in compliance with the chosen raw materials. We only need a sample of your glass casing or a drawing (a sketch is sufficient) and some further information.

You have a special request? +49 (0) 93 46-92 86-0



Cleaning:

First, take the stopcock-plug out of the glass casing. For this, loose the nut, remove the washer and, if applicable, the O-ring. Please ensure not to lose one of the single components. Rinse the plug as well as its casing with acetone. Once all components are dried, the stopcock plug can be assembled again. Do not use any abrasive cleaning agents as they might damage the sealing surfaces of the stopcock plug and the glass casing.

Explanation of symbols:

FDA conform

All parts coming into contact with the fluid are from materials that correspond to FDA requirements. A certificate of conformity is included with each shipment.



Volume/quantity discounts available



This item is a spare part.

Security Advice:

Although providing a very good chemical resistance, PTFE stopcock-plugs combined with glass vessels are not recommended for long-term storage of products that attack glass. The surface of the glass casing might get damaged. The possible leakage of the stopcock is a potential security risk.

After being used with such caustic products, the PTFE plugs have to be carefully rinsed with water before re-use. This helps also to remove deposits or efflorescence products especially in the bores. Such residues can damage the sealing surface of the plug when turning it and thus cause leakage.

The material PTFE is softer than glass. That is why PTFE plugs tend to adapt their form to the glass casing and to extend to the glass tube ends. Such distortion can affect the tightness. Therefore please loose the plug inside the glass casing after use and store the cleaned components in dust-free atmosphere until you need them again.

Copyright by BOHLENDER GmbH, all rights reserved. Copies of this leaflet in whole or in parts are only permitted with BOHLENDER GmbH's prior written consent.

BOLA

EINE MARKE DER
BOHLENDER GmbH
Waltersberg 8
D 97947 Grünsfeld
Germany

Telefon: +49 (0) 93 46-92 86-0
Mail: info@bola.de
www.bola.de