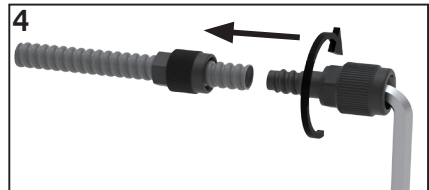
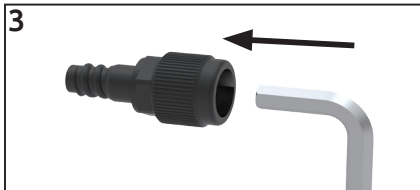
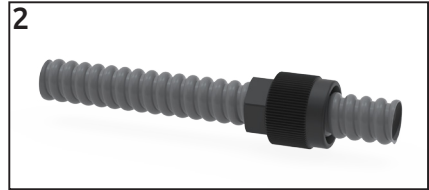
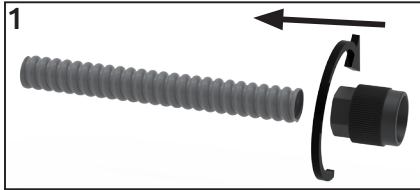


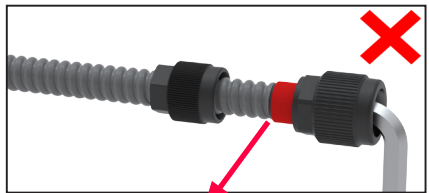
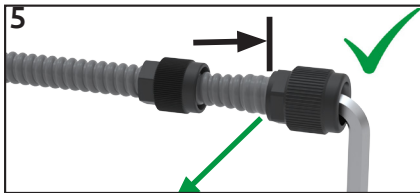
# b.safe

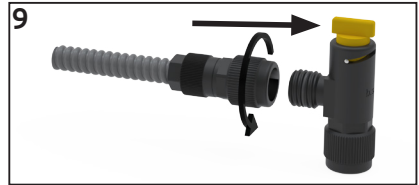
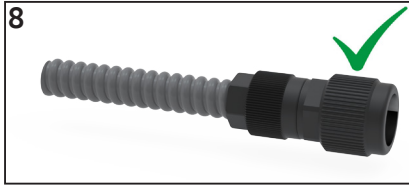
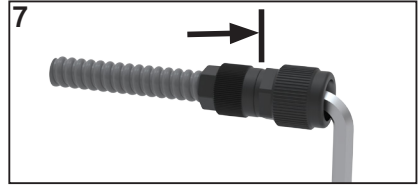
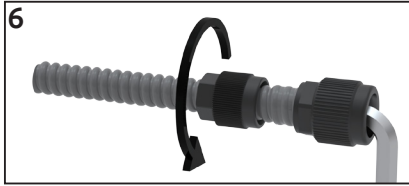
## Montage b.safe Waste Tube Assembly b.safe Waste Tube



**RICHTIG:** Schlauch bis zum Anschlag über die Olive schieben.  
**CORRECT:** Push the tube over the olive up to the stop.

**FALSCH:** Schlauch ist nicht bis zum Anschlag über die Olive geschraubt.  
**WRONG:** Tube is not fully over the olive screwed.





**[www.bsafe.de](http://www.bsafe.de)**  
**+49 (0) 93 46-92 86-0**